



The year of the ISPRS Technical Commission VIII Symposium has come. We hoped 2010 would be a brilliant year but the huge earthquake last January 12 in Haiti caused a lot of harm. We feel very painful when we think of the victims.

Our symposium theme, which is, Networking the World with Remote Sensing, should show to the humanity how to deal with such an unprecedented natural disaster.

Scientific knowledge and geo-spatial information related to disaster prevention and reconstruction can be proposed. We are planning to publish good papers of the Symposium in special issues of international scientific journals, and discussions with journal editors are going on. Moreover, the significance of this symposium was recognized by JAXA (Japan Aerospace Exploration Agency) and GEO (Group on Earth Observations), who are also co-sponsoring the event. The abstract deadline (the end of February 2010) is approaching. We are looking forward to the participation of everybody. Let's meet in Kyoto.

下 山 陽 久

President, ISPRS Technical Commission VIII  
Haruhisa Shimoda

# *New information from our symposium, ISPRS Commission VIII symposium.*

---

## 1) New co-organizer

JAXA (Japan Aerospace Exploration Agency) and GEO (Group on Earth Observations) has been joining us as new co-organizer. New co-organizer will have each a Special session (solicited session).

## 2) Co-operation with international journals

This symposium plans to choose excellent papers from the submitted full papers, and publish them in a special issue of international scientific journals. The symposium secretariat will contact with selected authors after symposium. Presently, the negotiations by the symposium secretariat for the publication of this special issue in international journals are progressing.

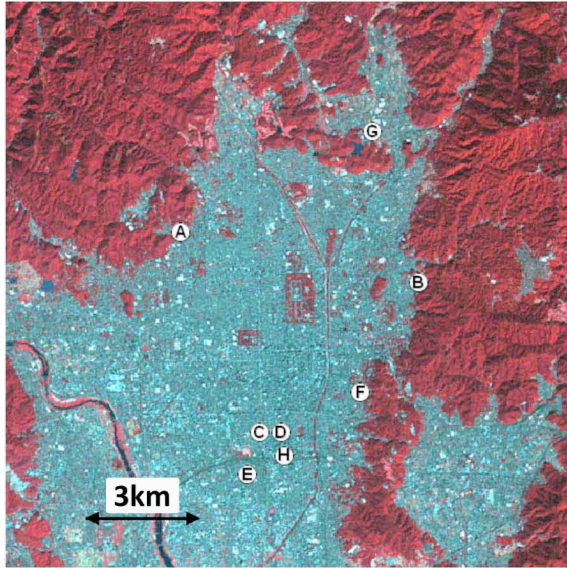
Please submit your paper to COM8 symposium, and present your research to the special issue.

The URL of the symposium is “<http://www.isprscom8.org/index.html>”.

The deadline for abstract submissions is Feb. 28th, 2010.

# Kyoto Sightseeing Spots (2) :Temples

There are about 1600 temples in Kyoto city and many of these temples are registered as UNESCO World Heritage Sites. In this the newsletter, the famous temples around central Kyoto and The Garden Oriental Kyoto where we will have the banquet dinner for this symposium are introduced.



A: Kinkaku-ji (formally Rokuon-ji) ... World Heritage site

B: Ginkaku-ji (formally Jishō-ji) ... World Heritage site

C: Nishi- Hongan-ji (formally Hongan-ji) ... World Heritage site

D: Higashi- Hongan-ji (formally Shinshu Honbyō)

E: Tō-ji (formally Kyō-ō-gokoku-ji) ... World Heritage site

F: Kōdai-ji & The Garden Oriental Kyoto

G: Kyoto International Conference Center

H: JR (Japan Railways) Kyoto Station

Landsat ETM+ image, observed on Oct 15, 2001, was downloaded from

the Earth Science Data Interface, Global Land Cover Facility, University of Maryland, USA. (<http://glcfapp.umiacs.umd.edu:8080/esdi/index.jsp>)

A: Kinkaku-ji (Temple of the Golden Pavilion)



The original Kinkaku-ji was built in 1397 to serve as a retirement villa for Shogun Ashikaga Yoshimitsu. The *Kinkaku* is a three-story building on the grounds of the Rokuon-ji temple complex. The top two stories of the pavilion are covered with pure gold leaf.

The pavilion functions as a *shariden*, housing relics of the Buddha (Buddha's Ashes). The top floor is built in traditional Chinese *cha'an* style.

Ashikaga Yoshimasa initiated plans for creating a retirement villa and gardens as early as 1460. After his death, Yoshimasa would arrange for this property to become a Zen temple. The official name is Jishō-ji. The temple is today associated with the Shokoku-ji branch of Rinzai Zen.

*Tetsugaku no Michi* (Philosopher's Walk) is located near Ginkaku-ji. Here is a very calm path of this area.

B: Ginkaku-ji (Temple of the Silver Pavilion)



C: Nishi- Hongan-ji



Nishi Hongan-ji (formally Hongan-ji) is one of the two temple complexes of Jōdo Shinshu in Kyoto. The other is Higashi -Honganji. Today it serves as the head temple of the Jōdo Shinshu organization. Nishi Honganji was established in 1602 by the Shogun Tokugawa Ieyasu when he split the main Honganji in Kyoto in two (Higashi-Honganji being the other) in order to diminish its power.

D: Higashi- Hongan-ji



E: Tō-ji



Tō-ji was founded in the early Heian period. The temple dates from 796, two years after the capital moved to Heian-kyō.

Five-story pagoda of Tō-ji stands 54.8 m high, and it is the tallest wooden tower in Japan. It dates from the Edo period, when it was rebuilt by order of the third Tokugawa Shogun, Iemitsu. The pagoda has been a symbol of Kyoto.

F: Kōdai-ji & The Garden Oriental Kyoto



Kōdai-ji was established in 1606 by Kōdai-in (Nene), who was the widow of Toyotomi Hideyoshi, to pray for her late husband.

For an explanation of terms concerning Japanese Buddhism, Japanese Buddhist art, and Japanese Buddhist temple architecture, see the Glossary of Japanese Buddhism. The left picture is Hōjō's garden.

There is one Italian restaurant "The Garden Oriental Kyoto" near Kōdai-ji. Japanese artist Takeuchi Seiho built it as private mansion at the beginning of Showa. It has about 4300m<sup>2</sup> including the beautiful garden. This mansion was named Higashiyama Sodoh.

We will have a banquet dinner at the 2nd floor of the annex building here!



Party room



Garden