



GEOS Common Infrastructure (GCI)

Report to CBC-9 Meeting

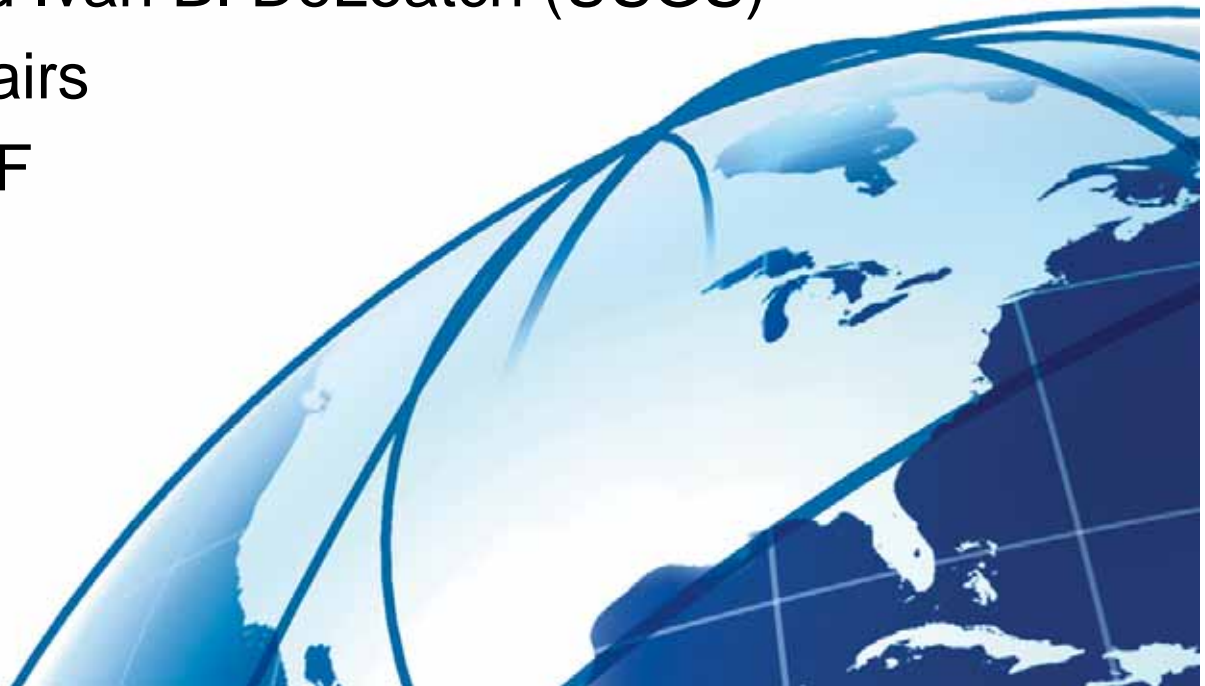
Alan Edwards (EC) and Ivan B. DeLoatch (USGS)

IOC Task Force Co-chairs

On behalf of the IOC-TF

Athens, Greece

28 April 2009





Presentation Overview

- **The GEOSS Common Infrastructure (GCI)**
- **GCI Initial Operating Capability (IOC) Task Force**
- **Issues for GCI Sustained Operations**
- **Next Steps for GCI**

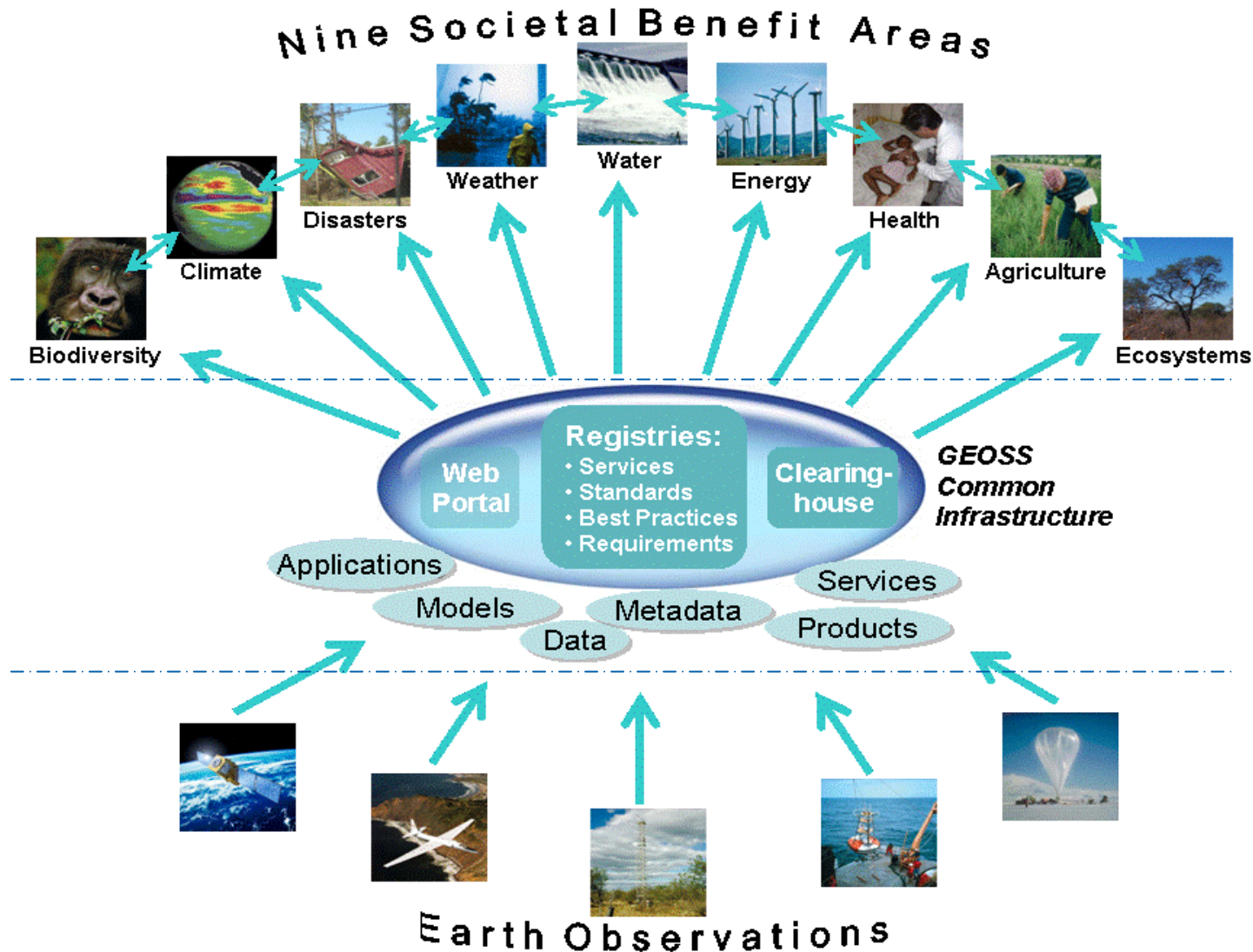


GEOSS Common Infrastructure (GCI)

- **The Cape Town Declaration: “We commit to explore ways and means for the sustained operations of the shared architectural GEOSS components and related information infrastructure”.**
- GCI provides **core capabilities** that enable GEOSS resources (systems, data and products) to be discovered, understood, and accessed by users and decision-makers.
- The GCI includes several **registries**, a search tool known as “**Clearinghouse**,” and **GEO Web Portals** that provide a user interface to search and access all GEOSS resources.
- The **Initial Operating Capability (IOC)** for the GCI was declared (open for business) in June 2008. Provides a one-year evaluation phase for the GEO community to use and deliver feedback.

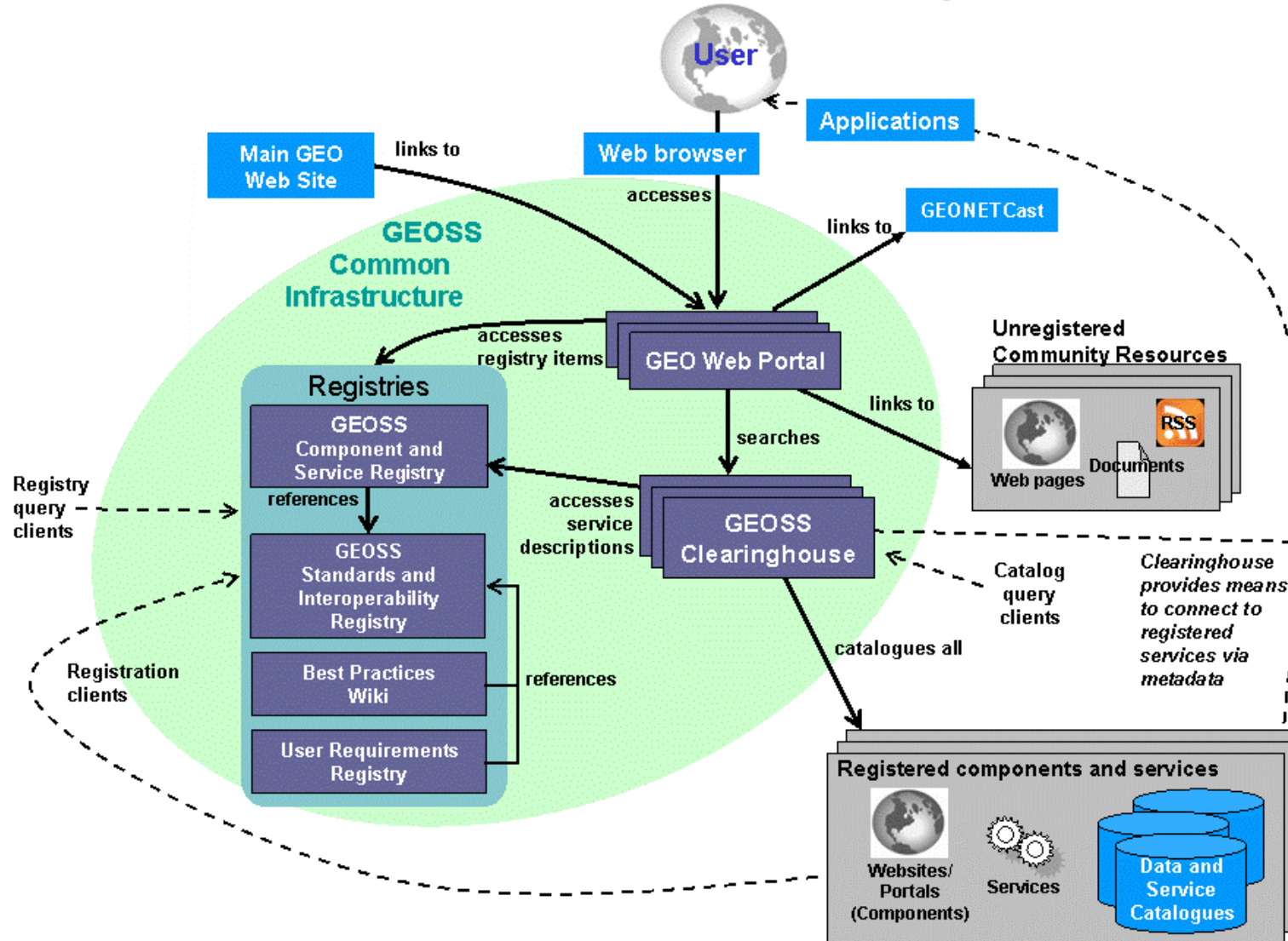


GEOSS Common Infrastructure Operational View





GCI operational interaction diagram





Current GCI Contributors

- **Component and Service Registry: USGS/George Mason University**
- **Standards and Interoperability Registry: IEEE**
- **Best Practices Wiki: IEEE**
- **GEOSS Clearinghouses: Compusult, ESRI, USGS**
- **GEO Web Portals: Compusult, ESRI, ESA/FAO**



GEO IOC Task Force

- **Established by the GEO Executive Committee in July 2008 for a period of 1 year in support of GEOSS IOC phase.**
- **Charged with evaluating the GCI initial operating capability and developing recommendations for the sustained operations of the GCI.**



IOCTF Deliverables

The IOC Task Force Work Plan foresees the following deliverables:

- **Concept of Operations Plan** (completed Oct 2008)
- **Process and Consolidated User Requirements Document** (March 2009)
 - to enhance the process and clarify the rules
 - to identify additional improvements and user requirements.
- **Evaluation and Analysis of Existing GCI Components** (May - June 2009)
- **Recommendations for long-term GCI operations** (May - August 2009)



Recommendations for long-term GCI operations

In accordance with the IOC-TF ToR, the key logistical items that the IOC-TF were asked to address, together with those issues that have arisen during the Initial Operating Capability (IOC) phase, will be treated under the following headings:

- **Access control and security**
- **Software licensing and ownership (intellectual property rights)**
- **Maintenance**
- **Enhancements**
- **Sustainability**
- **Models of GCI operational solutions**



Recommendations for long-term GCI operations

Access control and security

- Access control and security policies on GCI services;
- User interface policies in support of human and software clients, SBAs, communities of practice, and the general GEO community;
- Process for incorporating user community requirements into GCI;
- Other issues:
E.g.: Quality management of all GEOSS Registry content needs to be addressed as an operational expectation.



Recommendations for long-term GCI operations

Software licensing and ownership (intellectual property rights)

- **Software ownership and intellectual property issues regarding long-term operations (Proprietary versus open source concerns);**
- **Other issues.**



Recommendations for long-term GCI operations

Enhancements

- Presenting issues and alternatives for GCI extensibility;
- Other issues.



Recommendations for long-term GCI operations

Sustainability

- Long-term cost implications of voluntary, contributed, or contracted operations for each / all components;
- Accountability and responsibility for operations by service provider;
- Other issues.

And then in conclusion:

- **Models of GCI operational solutions**



Next Steps

- Undertake the Testing / Evaluation of the GCI
 - **(With thanks to EPA), a consolidated usability testing exercise will take place at Stresa in May**
 - AIP2 testing
- Continue to encourage Members and Participating Organizations to register resources to augment the GEOSS and improve the evaluation process.
- Begin to gather feedback from the GEO Committee (and wider GEO Community) on the issues and related recommendations that are to be made to the September 2009 meeting of EXCOM.



Thank You